



MINISTRY OF EDUCATION,
YOUTH & INFORMATION

Primary Exit Profile
May/June 2018

PRACTICE QUESTIONS

Grade 6

Social Studies

This paper consists of nine (9) items.

Social Studies CBT Practice Items

Question 1

Theme: The Physical Environment and its impact on human activities

Objective: Use data to make comparisons and draw conclusions about how mountains affect weather and climate (*G6SS -T2U1O4*).

Item Type: Constructed Response – Short Constructed Response

The table below provides information for two points in the Lollipop Mountain Range. Examine the table below.

POINTS	ALTITUDE	RAINFALL	HIGHEST ANNUAL TEMPERATURE	LOWEST ANNUAL TEMPERATURE
Candy Gap	2,756 m	32.4mm	24.0°C	9.0°C
Sandy Ridge	2,045 m	28.5 mm	26.0°C	11.0°C

(a) What conclusion can be made about the weather conditions at both points of the Lollipop Mountain Range?

(b) Using information from the table, give reasons to support your answer given in (a).

(3 marks)

Question 2

Theme: The Physical Environment and its impact on human activities

Objective: Gather information from multiple sources and use it to analyse the effects of human activities on mountains (*G6SS-T2U106*).

Item Type: Selected Response – Table Grid

The chart shows some observations made on the impact of human activities on mountains. Complete the chart by writing ONE (1) possible impact or intervention in the blank spaces.

Human Activity	Impact on the mountain	Human Intervention
Hillside farming		Terracing
Cutting down trees	Destruction of habitats for animals	
Road Construction		Retaining walls

(3 marks)

Question 3

Theme: Diversity sustainability and interdependence

Objective: Analyse the costs and benefits of individual and collective decisions and actions on the atmosphere (G6SS-T3U3O5).

Item Type: Constructed Response – Extended Constructed Response



Sourced from: <https://www.istockphoto.com/illustrations/deforestation?excludenudity=true&sort=mostpopular&mediatype=illustration&phrase=deforestation>

Examine the picture above and explain how the activities shown would benefit some persons while negatively affecting the environment.

(3 marks)

Question 4

Theme: Our common heritage

Objective: Distinguish between the pull and push factors that led to migration of the East Indians and the Chinese to the Caribbean (*G6SS-TIU1O5*).

Item Type: Selected Response- Table Grid

Mr. Singh left India in 1845 and migrated to Jamaica. Use a tick (✓) to identify the push factors for Mr. Singh.

Conditions	Push factors
Lack of job opportunities	
High wages	
Good living conditions	
Strict caste system	
Better medical care	

(1 mark)

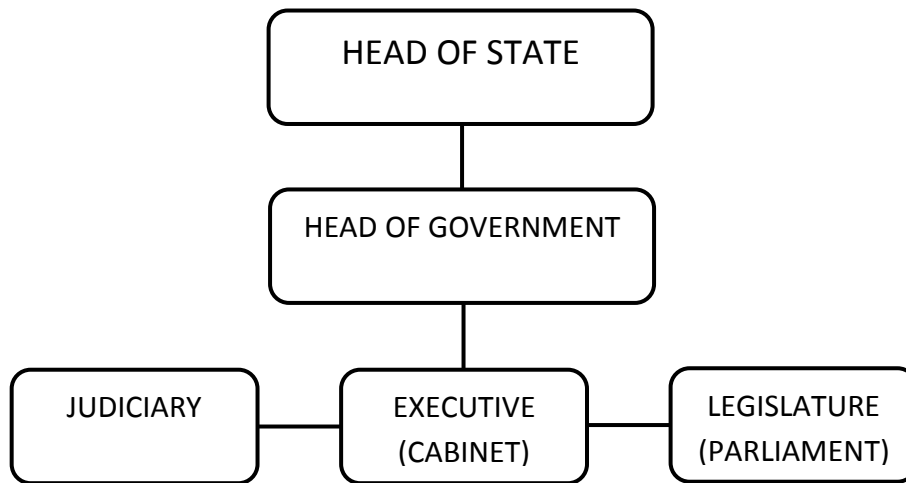
Question 5

Theme: Living together

Objective: Examine an organizational chart of the structure of Jamaican system of government then describe it and make deductions about the relationship among members (*G6SS-T2U307*)

Item Type: Constructed Response – Extended Constructed Response

The diagram below shows the structure of the Jamaican Government. Use it to answer questions 5.



Structure of the Jamaican Government

Explain one way in which the operation of the government would be affected by the absence of the judiciary arm of the government.

(3 marks)


Question 6

Theme: Living together

Objective: Identify regional organizations, describe their functions and use evidence to assess how these organizations foster integration (CARICOM, CDEMA, CXC, UWI, West Indies Cricket team) (G6SS-T3U4O6)

Item Type: Selected Response – Single Selected Response (with explanation)

Examine the image below and the statement that follows.



Caribbean Examinations Council

This organisation reflects the true meaning of regional integration.

(a) Do you agree with the statement? Yes No

(b) Give **two** (2) reasons to support your response.

(2 marks)



Question 7

Theme: The physical environment and its impact on human activities

Objective: Explain how rotation causes day and night (G6SS-T3U2O4)

Item Type: Selected Response – Multiple Selected Response

Below is the schedule for the world cup match between Russia and Egypt. The match was aired AND was seen LIVE in different countries.

Russia		against	Egypt	
June 19, 2018.				
<u>Played in:</u>		<u>Watched in:</u>		
St. Petersburg, Russia 9:00pm		Kingston, Jamaica 1:00pm		

Which **two (2)** of the following explains the difference in time that the match was seen in the two places?

- A. One place faces away from the sun because it is in a different hemisphere.
- B. Because of the earth's revolution, the places are now experiencing different seasons.
- C. The earth rotates, causing daylight in one place and night in the other.
- D. One country is located closer to the equator.

(2 marks)

Question 8

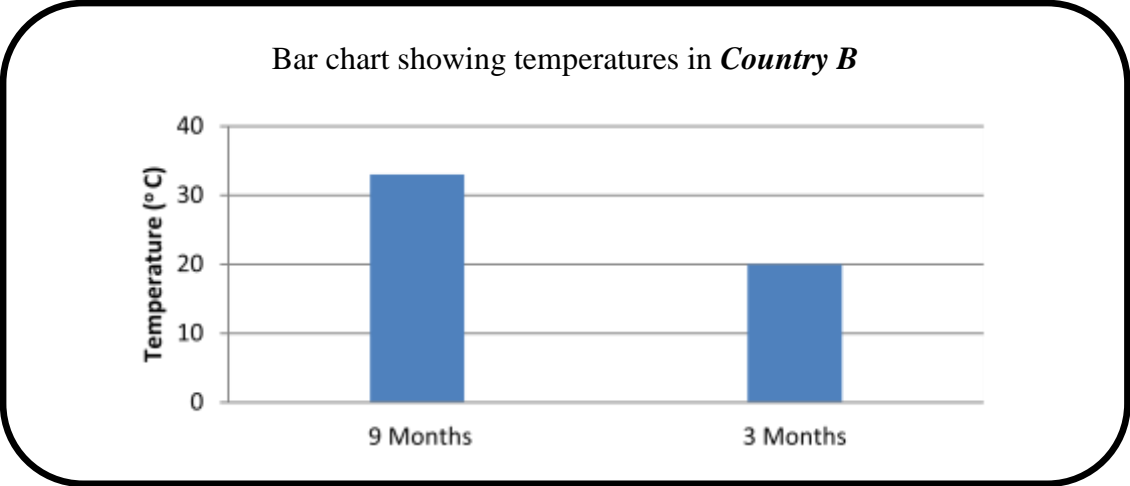
Theme: The physical environment and its impact on human activities

Objective: Examine information from multiple sources on how human activities are determined by the climatic zone in which they live and justify their adaptations (G6SS-T3U1O10).

Item Type: Selected Response – Table Grid

Examine the statement below about *Country A* and the bar chart of *Country B* and answer the questions that follow.

In Country A the temperature never goes above 10°C, winters are long and dark. Summers do not get very warm. The ground is frozen most of the year.



Based on the climate experienced in *Country A* and *Country B*, place a tick (✓) beside the **main** economic activities that is likely to be done in **both** countries.

Economic Activity	Likely	Not Likely
Fishing		
Farming		
Tourism		

(1 mark)

Question 9

Theme: Our Common Heritage

Objective: Identify various ways of preserving Caribbean culture (*G6SS- TIU1O11*)

Item Type: Constructed Response – Short Constructed Response

(a) Identify **one** significant contribution that **one** ethnic group has made to Jamaican culture.

(b) Suggest **one** way of preserving the culture of the ethnic group named in (a).

(2 marks)